

BrosTrend™

Quick Installation Guide

www.trendtechcn.com

BrosTrend™ AC600 WiFi Dual Band USB Adapter

Model No.: **WNA016**

Version No.: V2

Please follow the below steps to install your AC600 WiFi USB adapter; If you need further assistance, please send email to support@trend-tech.net.cn and we will reply to you as soon as possible. Thanks for purchasing BrosTrend WiFi products!

1. Hardware Installation

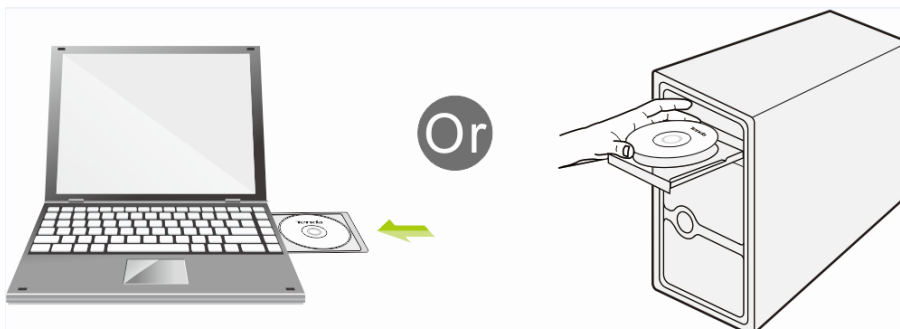
1.1 Turn on your PC, insert WNA016 to USB port of your PC.



Note: After you insert the WNA016 into USB port of your PC, in case you see the below interface, please click the Cancel button.



1.2 Insert the driver CD from the package into the CD-ROM of your PC, find the corresponding driver for the operating system of your PC. If your PC does not have CD-ROM, please visit our website www.trendtechcn.com to find WNA016 and then download the driver of it.




2. Install Driver on Your PC

2.1 **Important Notice:** In order to successfully install the driver, please uninstall the WiFi driver of your other WiFi adapter before installing driver of WNA016; In case you install two or more WiFi adapter drivers in one PC, it may cause conflicts between these drivers and cause the WiFi adapter fail to work. You can find the

installed WiFi adapter drivers and un-install it in the Control Panel→Install and Un-Install Software.

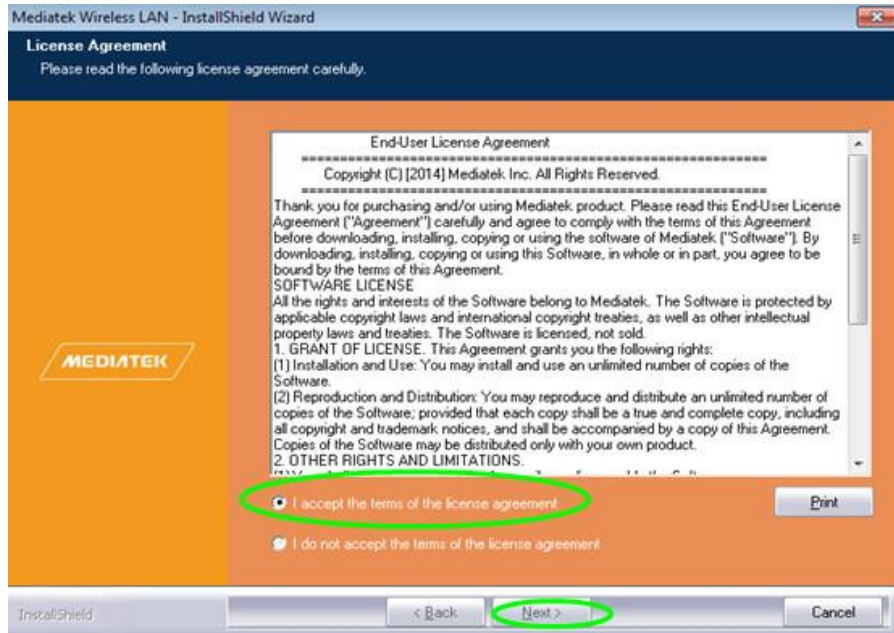
Below are steps for installing WNA016 driver on your Windows PC:

2.2 In the CD, please find the correct driver for your operating system, then double

click the driver installation button as this one: 

2.3 Please follow the on-screen instruction to click Next to finish the installation of driver.

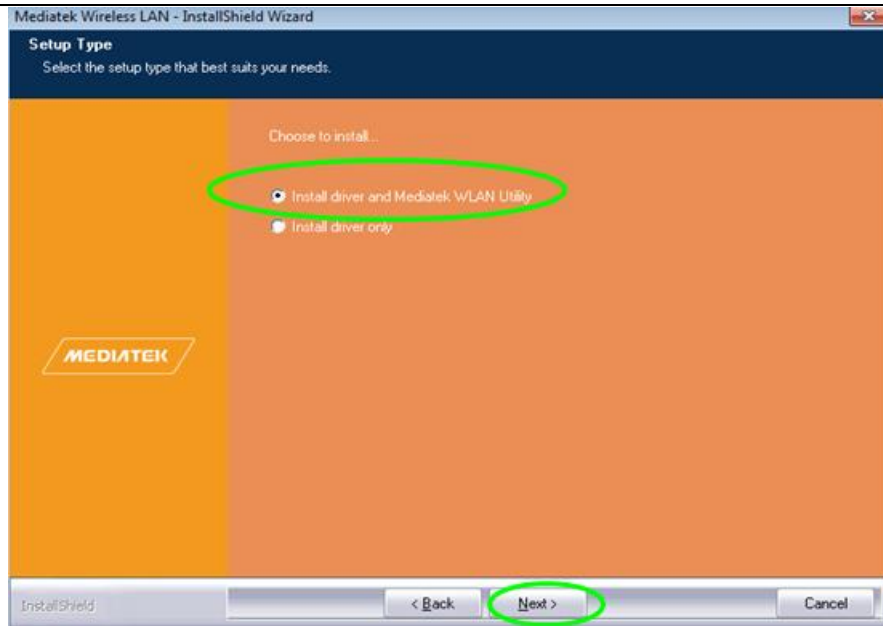
2.3.1 In the below interface, please click “ I accept....”, and then click “Next”



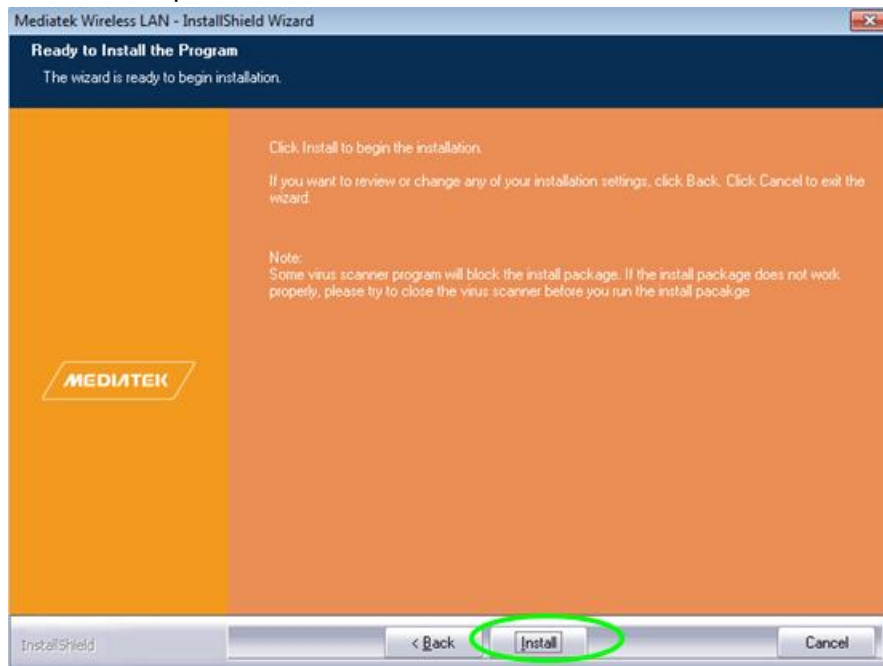
2.3.2 In the below interface, please select “Install driver and Mediatek WLAN Utility”, and then click “Next”:

Note: By selecting this, you install both the driver of this adapter, which enable this adapter to work on your PC, also the WNA016 WiFi Management Tool, which enables you to control your new WiFi adapter. For more about this, please refer to Part 3.2.

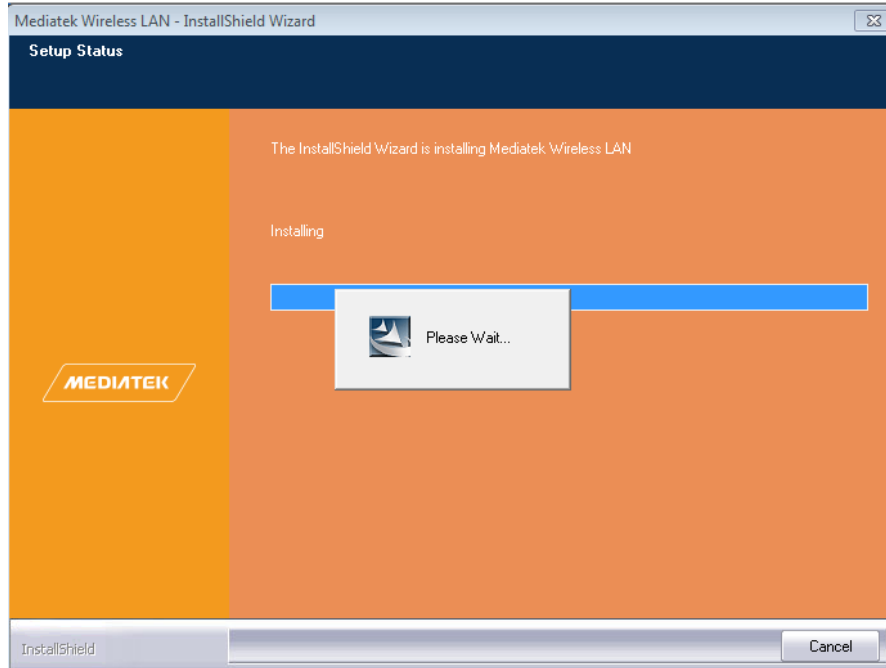
You can select “Install driver only” in this step also, by selecting this, the adapter will be installed on your PC, the WNA016 WiFi Management Tool will not be installed on your PC; you need to use the Windows Integrated WiFi network management tool to control this new WiFi adapter. For more about this, please refer to Part 3.1.



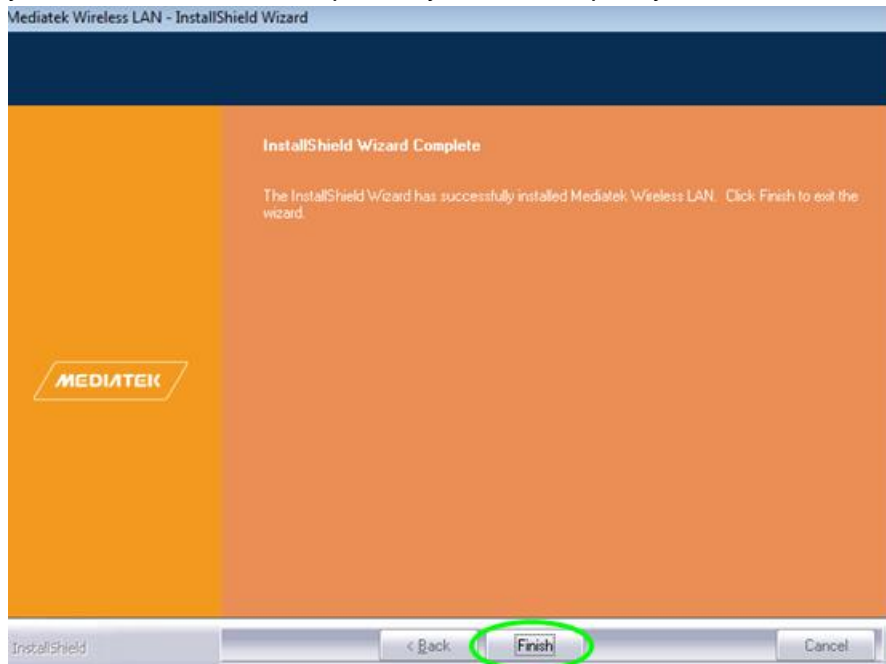
2.3.3 In the below, please click “Install”



2.3.4 When you see the below interface, the software are under installation now, please wait, please do NOT click the cancel button; otherwise, the driver installation will be terminated:



- 2.3.5 When you see the below interface, Please click “Finish”.
 Congratulations! Installation of software is finished; you can begin to use your new AC600 WiFi adapter on your PC for speedy internet connection!



3. Connect to Your WiFi Broadband Network

You can manage your WNA016 and connect it to your WiFi broadband network, there are two methods to do this, one is by using the Windows Integrated WiFi network management tool, the other is to use WNA016 WiFi Management Tool. If you want to use WNA016 WiFi Management tool, you need to make sure that you have installed this tool when installing the driver. Please refer to this in Step 2.3.2.

3.1 Use Windows Integrated WiFi Network Management to Connect your WNA016 to your WiFi Network. We here take Windows 8 as example.

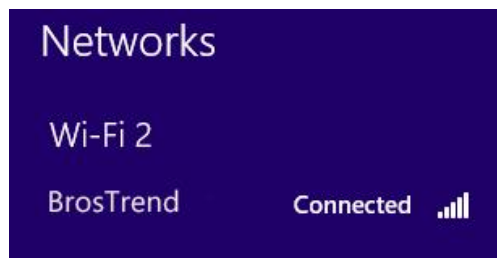
3.1.1 Click the icon  on the bottom right corner of your desktop.




3.1.2 Select your wireless network from the list, click **Connect** and then follow onscreen instructions.



3.1.3 When your wireless network is connected successfully, the following screen will appear.



3.1.4. Note:

3.1.4.1 If you cannot find the icon , please move your mouse to the top right corner of you desktop, select **Settings→Control Panel→Network and Internet→Network and Sharing Center→Change Adapter Settings**, right click Wi-Fi and select **Connect/Disconnect**.


3.1.4.2 If you cannot find your wireless network from the list, please make sure that your PC is not under Airplane mode as Airplane mode disables your Wi-Fi function.

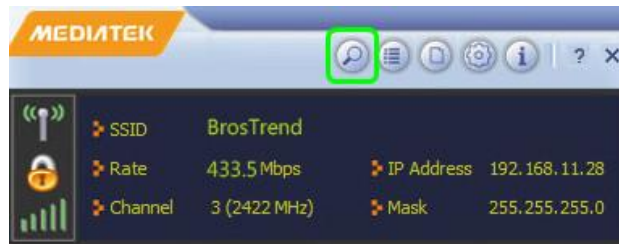
3.1.4.3 If the Wi-Fi network which you connect to does not have the Internet access, then you will get a Restricted status and a yellow exclamation mark will appear in the wireless icon in your system tray (lower-right corner).

3.1.4.4 If you are using Windows XP and cannot find its wireless management

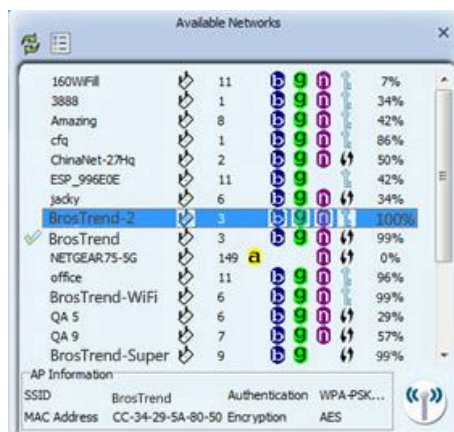
function, please make sure that you have enabled this wireless management function which is called Wireless Zero Configuration services on your XP.

3.2 Use WNA016 WiFi Management tool to Connect your WNA016 to your WiFi Network

3.2.1 In the right bottom corner of your PC, please double click this icon  to open the WNA016 WiFi Management tool and you will see the below interface, please click the button as marked in green color below to scan and find your WiFi network:



3.2.2 After clicking the scan button as mentioned above, you will see the list of WiFi network found as below:

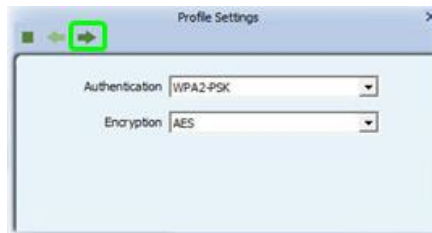


3.2.3 Please use your mouse to double click the WiFi network which you want to connect to.

3.2.4 Then you will see the below interface, **please click the button as marked in green color as below to go on:**

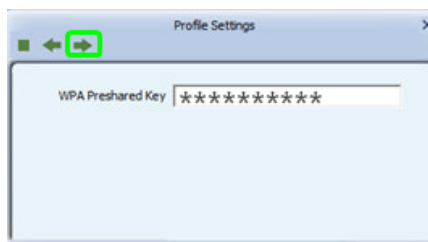
Note: Please note that in this step, the **ONLY** thing you need to do is to click the button marked in green color as below. You should **NOT** select any other options in this step. The Authentication type and Encryption type are already automatically matched with your uplink WiFi network and they are displaying in your screen. It is possible that the Authentication type and Encryption type being displayed in your interface is different from our below interface, this is because the Authentication type and Encryption type of your WiFi network is different our WiFi network. In case you manually choose the Authentication type and Encryption type which does not match with your current WiFi network, this will cause failure in the

Internet connection.

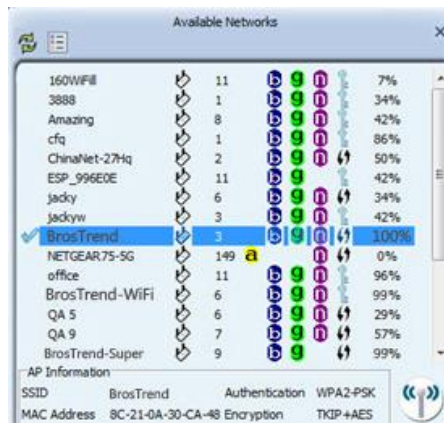


3.2.5 Then you will see the below interface, please input the WiFi key of your WiFi network, and then click the green button as marked in green color to go ahead.

Note: In case you input the wrong WiFi key, you will fail to connect to the WiFi internet, please go back to Step 3.2.3 and enter the correct WiFi key.



3.2.6 Then you are successfully connected to this new WiFi network, the WiFi Internet network that you are connected with is marked with a green tick. When you see this, you can successfully visit your WiFi Internet broadband network.



3.2.7 Note:

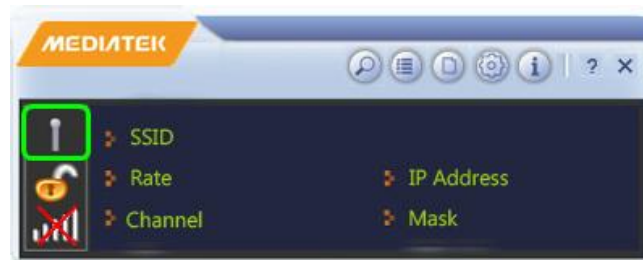
3.2.7.1 The below button marked in green color is the **WiFi On/Off button** of your WNA016 AC600 WiFi Adapter, by clicking it, you can turn on your WiFi or turn it off.



When it is with signal as shown below, it is turned on and you can use this WiFi adapter.



When it is without signal as shown below, it is turned OFF, you are not able to use this WiFi adapter to visit internet. You need to click the place marked in green color as below to turn it on again.



4. FAQ (Frequently Asked Questions)

4.1 Ask: I plug in WNA016 to the USB port of my PC and it does not work. What shall I do?

Answer: One of the below may cause the WNA016 fail to work, please check and try one or more of the below solutions:

- 4.1.1 Please try another USB port of your PC.
- 4.1.2 Please make sure that you have installed the driver on your PC. This adapter support the below Operating Systems, you need to install the correct driver for it:
 - Windows:Win8.1 32/64, Win8 32/64, Win7 32/64, Vista 32/64, XP 32/64
 - MAC OSX: 10.7/10.8/10.9/10.10
 - Linux
- 4.1.3 Please make sure that you are not installing more than one WiFi adapter drivers in one PC, this will cause WNA016 fail to work though you have

installed driver for it. Please remove all other WiFi adapters' drivers before install driver for WNA016. You can find more about this in Part 2.1.

- 4.1.4 Please make sure that you did not turn OFF WNA016 in the WNA016 WiFi Management tool. You need to make sure that it is turn ON. You can find more about this in Part 3.2.7.1.
- 4.1.5 In case the LED of WNA016 is on, this indicates that the driver is installed on your PC. You need to refer to the solution in Part 4.1.3 and Part 4.1.4
- 4.1.6 In case the LED of WNA016 is NOT ON, this indicates that the driver is NOT installed correctly on your PC or adapter is not plug correctly on your PC. You need to refer to the solutions in Part 4.1.1, Part 4.1.2 and Part 4.1.3.

4.2 Ask: What is the most secure WiFi encryption method to protect my WiFi network?

Answer: This WNA016 supports all the WiFi encryption method, it can auto match the encryption method of your WiFi network. You need to configure your encryption method in your WiFi router, the most secure one is WPA2, then WPA. We do not recommend using WEP, it is not safe though it is encrypted. Also, you can choose the encryption algorithm, the best one is AES. We do not suggest using TKIP, though TKIP is secured, while it lowers your network speed. **So WPA2-AES(also called WPA2-PSK) is the best one, it is most secure, while also offer optimal WiFi network speed.**

5. Copyright Note:

BrosTrend™ is the trademark of Trend-tech Technology Co. Limited. All other brand names mentioned herein are the trademark or registered trademarks of their respective holders.

All brands and product names are trademarks or registered trademark of their respective owners.

Specifications are subject to change without prior notice.

Copy 2015© Trend-tech Technology Co. Limited. All rights reserved.

6. Manufacturer Technical Support Information:

Technical Support: support@trend-tech.net.cn

Manufacturer: Trend-tech Technology Co. Limited

Website: <http://www.trendtechcn.com>

Address: Room 205, YaoXing HuaYuan, No. 45 XinHui DaDao, XinHui District, JiangMen City, GuangDong, CHINA